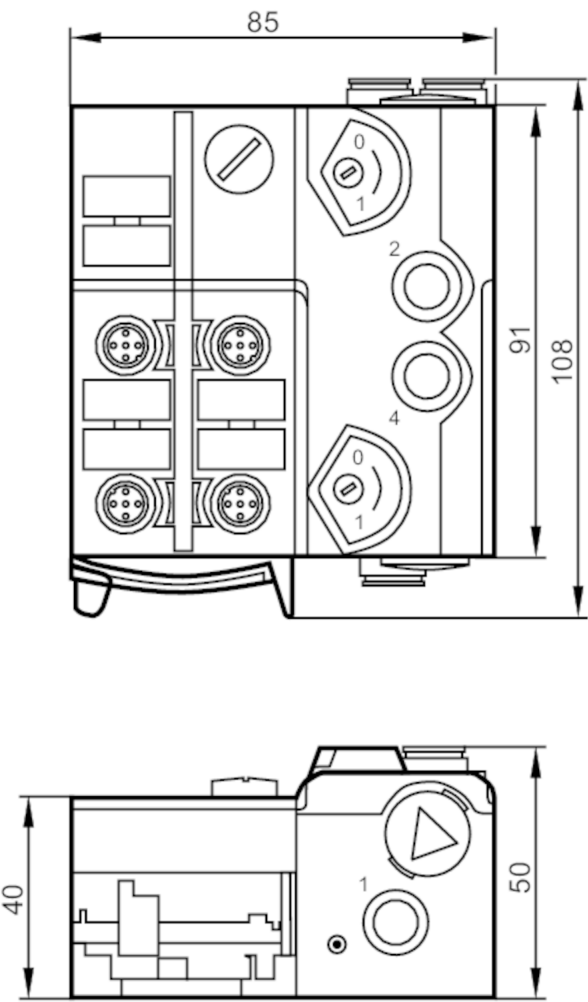


AC5270



AS-Interface Airbox with quick mounting technology

AirBox 5/3 closed 4DI-Y IP67



Application	
Application	field installation
Medium temperature [°C]	-10...50
Electrical data	
Operating voltage [V]	26.5...31.6 DC
Max. current consumption from AS-i [mA]	280
Integrated watchdog	yes
Inputs / outputs	
Number of inputs and outputs	Number of digital inputs: 4; Number of pneumatic outputs: 2



AS-Interface Airbox with quick mounting technology

AirBox 5/3 closed 4DI-Y IP67

Inputs					
Number of digital inputs	4				
Input circuit of digital inputs	PNP				
Sensor supply of the inputs	AS-i				
Voltage supply [V]	20...30; (via flat cable)				
Max. total current rating of inputs [mA]	200				
Input current High [mA]	6...10				
Input current low [mA]	0...2				
Switching level high [V]	> 11				
Digital inputs protected against short circuits	yes				
Outputs					
Number of pneumatic outputs	2				
Actuator supply outputs	AS-i				
Operating conditions					
Ambient temperature [°C]	-10...55				
Protection	IP 65; IP 67				
Tests / approvals					
EMC	EN 50295				
	IEC 61000-6-2				
MTTF [years]	258				
AS-i classification					
AS-i version	2.11; 3.0				
AS-i addressing	Addressing socket				
Extended addressing mode	yes				
AS-i profile	S-7.A.E				
AS-i I/O configuration [hex]	7				
AS-i ID code [hex]	A.E				
Data bits	Data bit	D0	D1	D2	D3
	Input	1	2	3	4
	Socket	I-1/2	I-1/2 I-2	I-3/4	I-3/4 I-4
	Pin	4	2 4	4	2 4
	pneumatic output	2	4	-	-



AS-Interface Airbox with quick mounting technology

AirBox 5/3 closed 4DI-Y IP67

Mechanical data		
Weight	[g]	381.5
Type of mounting		quick mounting
Material		PA; POM; Piercing contacts: CuSn6 nickel-plated and tin-plated
Pneumatic system		1 x 5/3-way slide valve (free from overlapping); middle position blocked
Operating pressure range	[bar]	3...8
Operating pressure range	[MPa]	0.3...0.8
Operating pressure range	[psi]	43.5...116
Air flow at 6/5 bar	[l/min]	400
Permissible compressed air		non-lubricated compressed air class 6-3-1; lubricated compressed air class 6-3-4
Manual override		pressing/releasing or pressing/turning/locking
Tube fittings		8 mm
Exhaust		exhaust can be discharged through tube connection
Displays / operating elements		
Display	Power	LED, green
	errors	LED, red
	Function	LED, yellow
Electrical connection		
Module connection		Flachkabel
Accessories		
Items supplied		lower part
Accessories (optional)		Mounting plate:, E74999
		Module lower part:, E75000
		Protective cap: M12, E73004
		sealing plug:, E75231
		Silencer:, E75232
		Push-in L-fitting:, E75228
		Push-in T-fitting:, E75227
Remarks		
Remarks		If not pneumatically operated, E75231 sealing plug must be inserted.
		Avoid ingress of dirt and dust.
		Do not connect any of the following points to an external potential:
		L-, L+, I-1, I-2, I-3, I-4
		The connections are electrically connected with the AS-i cable.
Pack quantity		Please see the notes on compressed air and EMC/ESD under "Downloads"
		1 pcs.

AC5270



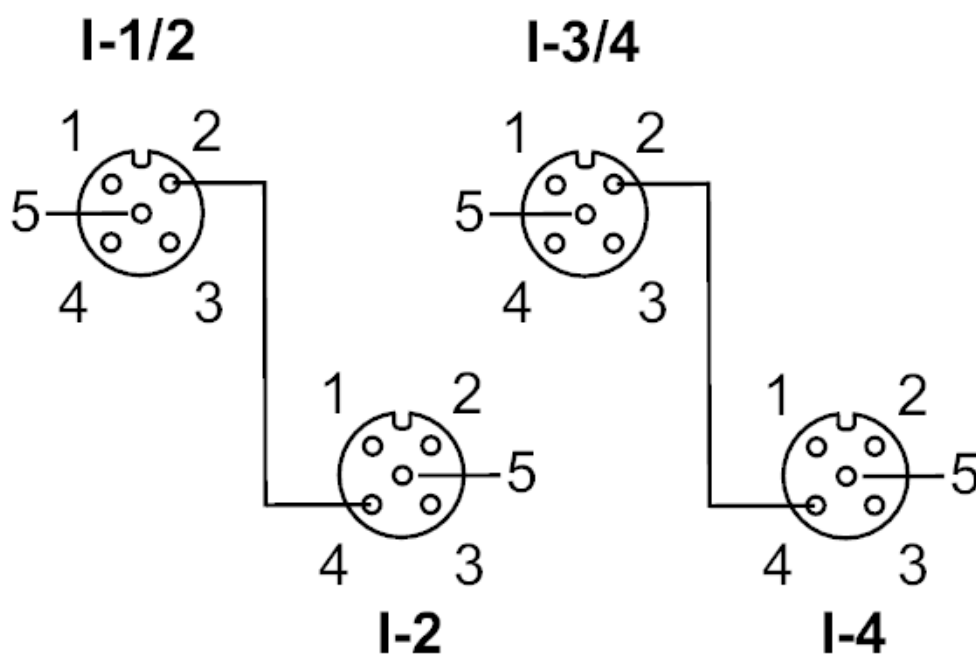
AS-Interface Airbox with quick mounting technology

AirBox 5/3 closed 4DI-Y IP67

Electrical connection

quick mounting technology for AS-i flat cable: ; three selectable directions

Connection



Connector: M12

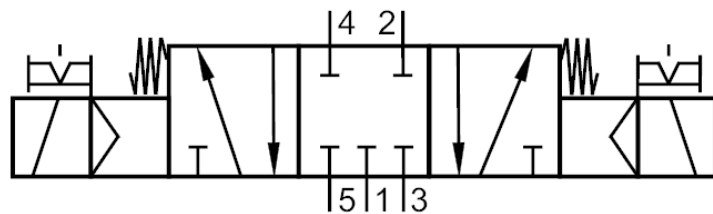
AS-Interface Airbox with quick mounting technology

AirBox 5/3 closed 4DI-Y IP67

Inputs	
Socket I-1/2	
1	Sensor supply L+
2	Data input 2
3	Sensor supply L-
4	Data input 1
5	not used
Socket I-2	
1	Sensor supply L+
2	not used
3	Sensor supply L-
4	Data input 2
5	not used
Socket I-3/4	
1	Sensor supply L+
2	Data input 4
3	Sensor supply L-
4	Data input 3
5	not used
Socket I-4	
1	Sensor supply L+
2	not used
3	Sensor supply L-
4	Data input 4
5	not used

Diagrams and graphs

Pneumatic symbol



1 x 5/3-way slide valve (free from overlapping); middle position blocked