

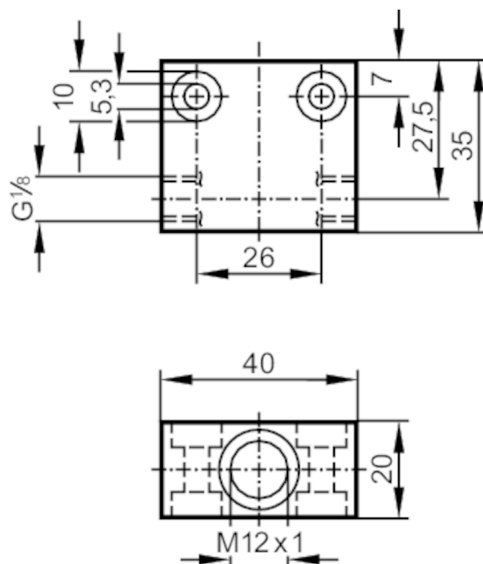
E40026



Process adapter for small volumetric flow quantities

FLOW ADAPT M12X1 AL

Article no longer available - archive entry



Application	
Design	for flow sensors and compact flow monitors M12 x 1
Medium temperature [°C]	0...80
Measuring/setting range	
Flow range [ml/min]	2...50
Tests / approvals	
Pressure equipment directive	A possible classification to PED depends on the application and has to be carried out by the user / operator.
Pressure Equipment Directive EAC	The adapter is intended for use in devices, machines and installations that do not fall under the categories of the technical rule TR CU 032/2013.
Safety instructions	The compatibility between medium and product material has to be checked in all applications.
Mechanical data	
Type of mounting	cable gland; (G 1/8 A Mounting orientation beliebig)
Dimensions [mm]	M12 x 1
Thread designation	M12 x 1
Material	AlZnMgCu (3.4335) black anodized
Remarks	
Pack quantity	1 pcs.