

# AC5012



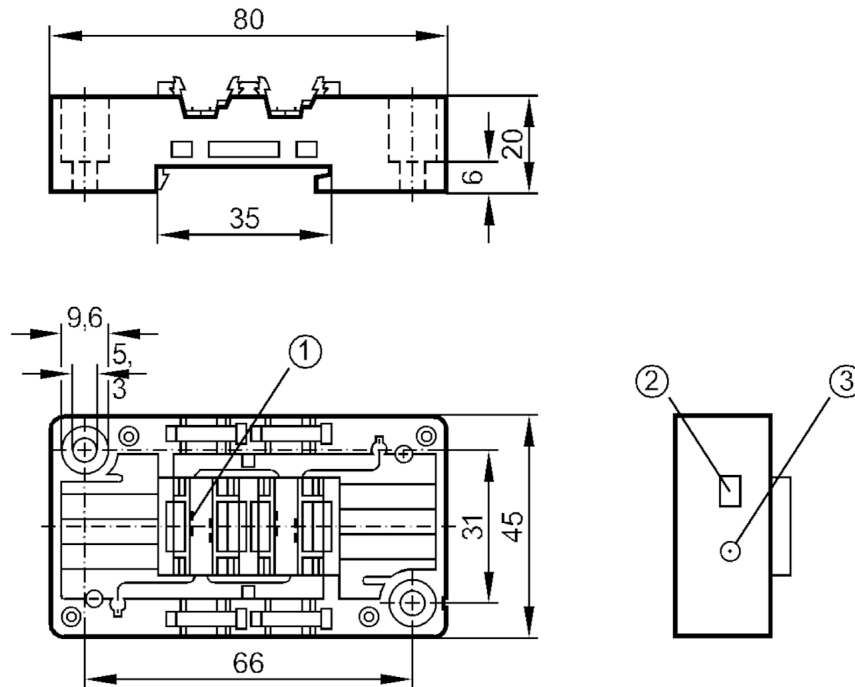
## Lower part for AS-Interface module

EMS-Base FC Addr.-socket V2A

Article no longer available - archive entry

Alternative articles: AC5014

When selecting an alternative article and accessories please note that technical data may differ!



- 1 contact pins
- 2 panel for labelling
- 3 Addressing socket



### Electrical data

Operating voltage [V] 26.5...31.6 DC

### Outputs

Electrical design AS-i

Contact rating < 2 A

### Operating conditions

Ambient temperature [°C] -25...85

Protection IP 67; (depending on the upper part used: IP 20 / IP 65 / IP 67)

### AS-i classification

AS-i addressing Addressing socket

### Mechanical data

Type of mounting Mounting on DIN rail and panel

Dimensions [mm] 45 x 80 x 20

Material PBT; stainless steel (1.4305 / 303)

### Remarks

Pack quantity 1 pcs.

# AC5012



## Lower part for AS-Interface module

EMS-Base FC Addr.-socket V2A

### Electrical connection

contact pins in module upper part :

quick mounting technology for AS-i flat cable: