

WAVESERIES WAS4 PRO DC/DC

Weidmüller Interface GmbH & Co. KG
Klingenbergstraße 26
D-32758 Detmold
Germany
Fon: +49 5231 14-0
Fax: +49 5231 14-292083
www.weidmueller.com



WAS/WAZ6 TTA is a universal signal converter and trip amplifier that can be configured on the PC. Combines the functions of isolation, transmission, linearisation and trip amplification in a single module.

These exceptional characteristics and outstanding configurability combine to make the TTA truly unique. The TTA functions with stability and precision under a wide range of voltages and ambient temperatures. It is compatible with all standard sensor types.

- Universal input signals: temperature signals such as resistance thermometer, thermocouple, potentiometer, frequency transmitter, DC voltage signals and current signals
- Loop-powered or passive input
- Wide-range power supply: 18 – 264 V AC/DC
- User-defined linearization
- Inputs and outputs can be configured on PC
- Combined analogue and relay output
- Ambient temperature range: -40 °C ...70 °C

The CBX200 USB interface is used to connect to the PC. The WAS/WAZ6 TTA is also offered as an option with ATEX Zone 2 and UL C1D2 approvals.

General ordering data

Delivery status	This article will no longer be available in the future.
Available until	2017-10-15
Type	WAS4 PRO DC/DC
Order No.	8560740000
Version	Signal converter/insulator, Screw connection
GTIN (EAN)	4032248207350
Qty.	1 pc(s).
Alternative product	1481970000

**WAVESERIES
WAS4 PRO DC/DC**

Weidmüller Interface GmbH & Co. KG
 Klingenbergstraße 26
 D-32758 Detmold
 Germany
 Fon: +49 5231 14-0
 Fax: +49 5231 14-292083
 www.weidmueller.com

Technical data**Dimensions and weights**

Length	92.4 mm	Length (inches)	3.638 inch
Width	12.5 mm	Width (inches)	0.492 inch
Depth	112.4 mm	Depth (inches)	4.425 inch
Net weight	132.2 g		

Temperatures

Operating temperature, max.	70 °C	Operating temperature, min.	-10 °C
Storage temperature, max.	85 °C	Storage temperature, min.	-40 °C
Operating temperature	-10 °C...70 °C	Storage temperature	-40 °C...85 °C

Probability of failure

MTBF	76 Years	MTTF	76 Years
------	----------	------	----------

Environmental Product Compliance

REACH SVHC	Lead 7439-92-1
------------	----------------

Input

Number of inputs	1	Input voltage	configurable, ± 20 mV... ± 200 V
Input resistance, voltage	approx. 1 M Ω	Input current	configurable, ± 0.1 mA... \pm 100 mA
Input resistance, current	< 5 mA: approx. 100 Ω ; >5 mA: approx. 5 Ω		

Output

Number of outputs	1	Output voltage, note	0... ± 10 V
Output current	0... ± 20 mA	Adjustment range, zero point	± 25 % of the measuring span of selected output range
Adjustment range, amplification	0.33...3.30 x end value of selected output range	Cut-off frequency (-3 dB)	> 10 kHz/ < 10 Hz
load impedance voltage	≥ 1 k Ω	Load impedance current	≤ 600 Ω
Offset voltage	10 mV	Offset current	20 μ A
Status indicator	Green LED	Displacement	-100%, -50%, 0%, 50%, 100% of measuring span

General data

Accuracy	< 0.1 % of end value	Configuration	DIP switch and potentiometer, with reference voltage/current sources
Galvanic isolation	3-way isolator	Input/Output	configurable
Power consumption	ca. 1 W	Rail	TS 35
Step response time	120 μ s at limiting- frequency setting > 10 kHz, 75 ms at limiting- frequency setting < 10 Hz	Temperature coefficient	≤ 60 ppm/K of final value
Voltage supply	22...230 V AC/DC +10 %		

**WAVESERIES
WAS4 PRO DC/DC**

Weidmüller Interface GmbH & Co. KG
 Klingenbergstraße 26
 D-32758 Detmold
 Germany
 Fon: +49 5231 14-0
 Fax: +49 5231 14-292083
 www.weidmueller.com

Technical data**Insulation coordination**

EMC standards	DIN EN 61326, EN 61000-6 /-2, EN 61709 (SN 29500) MTBF	Galvanic isolation	3-way isolator
Impulse withstand voltage	5 kV, 1.2/50 µs (IEC 255-4)	Insulation voltage	4 kV _{eff}
Insulation voltage input or output/rail	4 kV _{eff}	Insulation voltage input or output/supply	4 kV _{eff}
Pollution severity	2	Rated voltage	600 V
Surge voltage category	III		

Connection data

Type of connection	Screw connection	Stripping length, rated connection	7 mm
Tightening torque, min.	0.4 Nm	Tightening torque, max.	0.5 Nm
Clamping range, rated connection	2.5 mm ²	Clamping range, min.	0.5 mm ²
Clamping range, max.	2.5 mm ²		

Ratings IECEx/ATEX/cUL

Certificate no. (cULus)	E337701
-------------------------	---------

Classifications

ETIM 6.0	EC002653	ETIM 7.0	EC002653
eClass 9.0	27-21-01-20	eClass 9.1	27-21-01-20
eClass 10.0	27-21-01-20		

Approvals

Approvals



ROHS Conform

Downloads

Approval/Certificate/Document of Conformity	Declaration of Conformity
Engineering Data	EPLAN, WSCAD
Software	WaveTool.zip
User Documentation	Instruction sheet

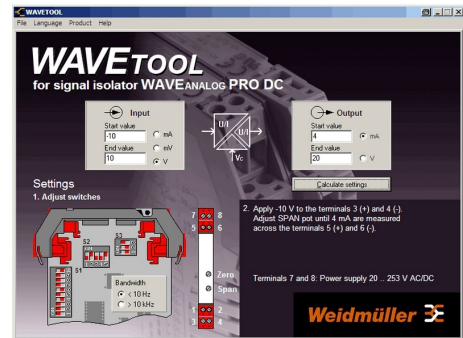
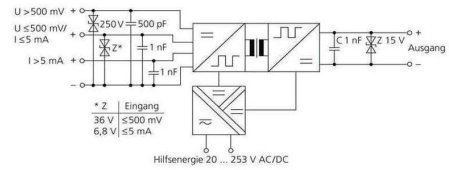
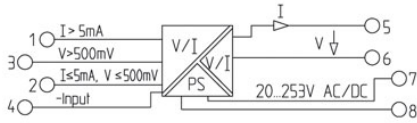
Data sheet

**WAVESERIES
WAS4 PRO DC/DC**

Weidmüller Interface GmbH & Co. KG
 Klingenbergstraße 26
 D-32758 Detmold
 Germany
 Fon: +49 5231 14-0
 Fax: +49 5231 14-292083
 www.weidmueller.com

Drawings

Electric symbol



Screenshot example, Wave tool software

